



TARNEIT GARDENS  
a great place to grow

# community newsletter



Ereatara Johnson selects his favourite toy and shows mum Carol and Little Buddies representative Jenny Baker [left].

## Sponsorship delivers smiles all round

**Tarneit Gardens is helping put smiles on the faces of the young and old throughout Wyndham thanks to its 2010 Community Sponsorship Program.**

Peet Limited called for nominations for the Tarneit Gardens Sponsorship Program in late 2009 and recently announced the two lucky funding recipients as the Wyndham Little Buddies Toy Library and Wyndham Lodge Community Aged Care.

The Wyndham Little Buddies Toy Library is using the funds to inject extra fun into playtime for preschoolers in Werribee and Point Cook by purchasing in extra toys for the library, which is accessed by up to 500 families in the area.

Down the road on Synnot Street, 60 seniors at Wyndham Lodge Community Aged Care will enjoy a more comfortable place to relax as the sponsorship is used to purchase outdoor furniture for the facility's sensory garden.

Peet Limited Managing Director and CEO Brendan Gore said Peet was pleased to support both groups to improve their services to the local community.

"Both Wyndham Lodge and the Little Buddies Toy Library provide valuable services to the community and Peet's support will assist them in achieving their goals," said Mr Gore.

The not-for-profit aged care facility,

Wyndham Lodge, offers a home-like setting for residents and its sensory garden is a popular place for leisure activities.

Wyndham Little Buddies Toy Library provides families with children up to the age of five with affordable access to a varied selection of safe and age-appropriate toys that can help preschoolers learn and develop through play.

The Library has two branches in Werribee and Point Cook, with the Werribee facility located on Kookaburra Avenue, around 15 minutes from Tarneit Gardens.

For enquiries about the Toy Library, please contact Little Buddies on 0434 863 570.

### Win a toy library membership

To mark the launch of Tarneit Gardens' partnership with the Wyndham Little Buddies Toy Library, Peet is giving away five memberships.

Winners will receive a six month membership to the library, which will allow the family to borrow two toys plus a puzzle or game every two weeks.

To win, email your name and contact details to [community@peet.com.au](mailto:community@peet.com.au) and mark the subject line as 'Tarneit Gardens Toy Library Competition'.

Entries close on 21 May 2010 and winners will be notified in early June 2010.



# Sales update

Each time homesites have been released this year they've been quickly snapped up by homebuyers – reflecting the continuing popularity of the area and our Tarneit Gardens community.

Young families, first homebuyers and upgraders have all been among those purchasing land at Tarneit Gardens over the past few months, with larger lots released in Stage 17 proving very popular.

Stage 15 has also almost sold out and, once these two stages have been purchased, we will have a short break in sales while we prepare more lots for homebuyers, which we expect to release later in the year.

Between now and then, we expect to welcome more residents to our community, as many of the 150-plus homebuyers who secured land at Tarneit Gardens last year complete their new homes.

As more and more information is released about local transport enhancements and new services in the area, there's no doubt residents will be moving into an established community that continues to grow and thrive.



New homesites recently completed at Tarneit Gardens.

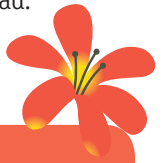


## Sales office opening times

**While we await the release of new land at Tarneit Gardens, the sales office will be open one day a week – Saturdays from 12pm to 3pm.**

Homebuyers are also welcome to make appointments at other times by calling Tarneit Gardens' Sales Representative on [03] 8742 2333 or 0425 814 646.

Residents can stop in at the Sales Office on Saturdays to ask any questions they might have about the community and can contact Peet at any other time via our dedicated Community Information Line on 1800 819 912 or email [community@peet.com.au](mailto:community@peet.com.au).



## Jobs boom tipped for Wyndham

**Residents at Tarneit Gardens are expected to benefit from a new industrial and commercial precinct to be developed just 10 kilometres from the community.**

A large tract of land in Truganina has been released by the State Government to support its 'Truganina Employment Precinct Structure Plan'.

An estimated 15,000 new jobs are expected to be created over the next few decades within the precinct.

For residents at Tarneit Gardens, the precinct will provide new job options closer to home and, potentially, additional services for the community!



## Keogh Homes takes fresh approach to classic

**The Tarneit Gardens Display Village, located on Tarneit Road, features home designs to inspire every homebuyer.**

A selection of Victoria's leading builders have their latest homes on display, including Keogh Homes and its Californian Bungalow.

The one-storey home has everything a growing family needs, including a master bedroom with his 'n hers walk-in robes and an ensuite bathroom.

Two well-sized bedrooms are complemented by

a family sized bathroom, plus a study or small guest room.

The focal point of the home is the spacious open plan family/living area that incorporates a galley-style kitchen that opens out onto a covered alfresco area – perfect for entertaining!

The home is located in the Tarneit Gardens Display Village at 725 Tarneit Road in Tarneit and is open Saturday to Wednesday from 1pm to 5pm. For more information, phone [03] 9748 7600.

# Development update

We're now well past the half way point of development at Tarneit Gardens and quickly moving forward to prepare new homesites and public spaces within our community.

With more than 600 households already calling Tarneit Gardens home, and only a handful of land releases remaining, we're busy preparing plans for the final areas of the community in stages 16 and 18.

These stages will include a range of elevated homesites, as well as a dedicated neighbourhood activity area, which is expected to offer commercial and community facilities. Plans for this area will be provided as soon as the details are finalised in the coming year.

Meanwhile, construction work in stage 17 is nearing completion and Stage 15 is getting underway.

You may have also noticed last year's planting and landscaping activities around the community has paid dividends, with the gardens faring well during the warm Summer months. The plants are expected to be well established as we start to welcome the Winter rains.

If you have any queries about Tarneit Gardens development activities, please email [community@peet.com.au](mailto:community@peet.com.au) or call 1800 819 912.



The George family outside their home at Tarneit Gardens.

## Meet the neighbours

### The George family

**Local dance teacher and mother of two Lisa George was among the first to move into the Tarneit Gardens community and has enjoyed watching it take shape over the past few years.**

Together with husband Andrew and children Milli, aged two, and Reagan, six months old, the George family has seen the community grow from just a handful of homes to a bustling community of more than 600 households.

"We've settled in well and it has been great to see the facilities grow," said Mrs George.

"When we first moved in, there was only one park. Now we have a few to choose from, and there is play equipment to suit children of all ages."

Mrs George said although the community had grown up around them, it had kept its peaceful atmosphere.

"It's still a very quiet place to live and a great place for families," she added.

A number of those families have sent their children along to That Dance Place, the performing arts centre at which Mrs George has taught for over nine years.

"A couple of Tarneit Gardens children attend classes at the centre, though I don't think many of them realise I also live in the neighbourhood!" laughed Mrs George.

If you're interested in finding out more about That Dance Place, you can call Lisa George on (03) 9749 1155.

### Sayers Road works

The City of Wyndham has advised the completion of road works on the Tarneit Road and Sayers Road intersection has been temporarily delayed but will recommence as soon as possible.

If you have any queries on the progress of the road works, please call the Wyndham City Council on (03) 9742 0777.

### Better bus services



Expanded bus services started operating on 19 April 2010 throughout Wyndham.

The new services include five new bus routes and improvements to eight existing routes, meaning most bus routes in Wyndham now operate until 9pm, seven days a week.

Key changes that benefit Tarneit Gardens' residents include:

- Improvements to routes 442 and 444
- New service [route 446] to Sayers Road, linking directly with Hoppers Crossing, Werribee Plaza and Werribee Station

The Department of Transport has more information at [www.metlinkmelbourne.com.au](http://www.metlinkmelbourne.com.au).



Planting works last year have paid dividends this Summer.

## What's on

### 2 May 2010 from 10am–1pm Community Bike Event

President's Park, Corner of McGrath and Heaths Roads, Werribee

Discover Wyndham's bike paths by joining a guided bike ride beginning at President's Park. There are two routes to choose from depending on your fitness and interest. Register with the City of Wyndham on [03] 9742 8127 or email Nicole.White@wyndham.vic.gov.au.

### 2 May 2010 from 9am–1pm Wyndham Tree Planting Day

Latham Street Reserve, Werribee

Enjoy the outdoors and plant a tree with Wyndham Rotary. All materials will be supplied on the day and a free BBQ lunch will follow. Please confirm your attendance with Carly Sullivan on [03] 9742 8140.

### 15 May 2010 at 8pm Melbourne Chamber Orchestra

Wyndham Cultural Centre

Melbourne's premier chamber orchestra will be in Wyndham with music to inspire from some of Australia's finest next-generation string players. Tickets are available from Box Office on [03] 9741 9500.

### Every Wednesday from 7–9pm GOSS Community Choir

Tarneit Community Learning Centre

Step out of the shower and join the GOSS Community Choir! If you're over 16 years of age and love to sing, contact Dene Menzel on 0432 936 849 or call the Tarneit Community Learning Centre on [03] 9748 9822.



**(03) 8742 2333**  
**www.tarneitgardens.com.au**

Our land sales office is open  
Saturdays from 12–3pm.  
Cnr Harrington Ave and Tarneit Rd, Tarneit.  
[Melways Ref: 202 A5]

## Holiday fun!

Tarneit Gardens' residents enjoyed a cool start to the 2009–10 holiday season as Santa traded in his sleigh for a Mr Whippy van and handed out free ice-creams and candy canes.

Top right: Timmy Laing was only too pleased to give Santa a helping hand.

Right: Rhiannon Hemming, Erin Gundy and Peyton Lawson were quick to join in the fun.



Adam and Mahelle Al-Hakkani have the dripping ice-cream problem licked!

## Staying active

**Being physically active is an important part of leading a healthy lifestyle and one of the easiest ways to get active is to walk.**

The Heart Foundation says physical activity provides a range of health benefits and the good news is activity doesn't have to be vigorous – moderate activity, such as brisk walking, is great for your health!

With a network of pedestrian and cycling paths, parklands and open spaces in Tarneit Gardens, there are plenty of opportunities for you to get active and start enjoying the benefits!

Regular walking can help you maintain a healthy weight, improve your fitness and reduce your risk of developing conditions such as heart disease, type II diabetes, osteoporosis and some cancers.

Walking is low impact, requires minimal equipment, can be done at any time of day and can be performed at your own pace!

For more information on walking your way to better health, including details of walking groups, you might like to visit these websites:

- [www.goforyourlife.vic.gov.au](http://www.goforyourlife.vic.gov.au)
- [www.heartfoundation.org.au](http://www.heartfoundation.org.au)
- [www.betterhealth.vic.gov.au](http://www.betterhealth.vic.gov.au)



The pedestrian and cycling pathways at Tarneit Gardens are ideal for getting active.